



Burford Gardens, Palmers Green, London, N13
Asking Price £725,000 Freehold

Anthony Webb
ESTATE AGENTS

Burford Gardens, Palmers Green, London, N13

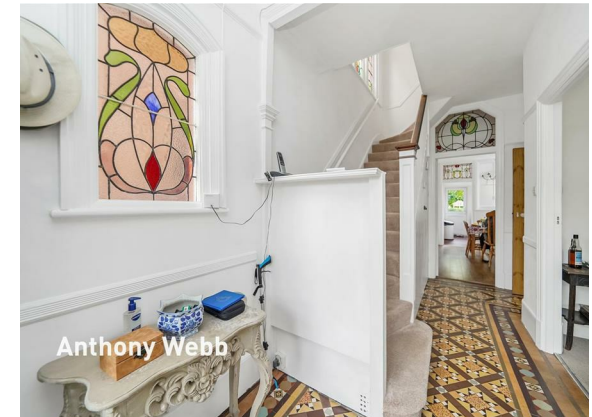
A chain free Edwardian three bedroom, three reception end of terrace house offering 1289sq ft of living space over two floors. Nestled in a desirable road off Fox Lane, this property offers original features including a tessellated tiled floor hallway, stained glass windows and French doors to the 70ft rear garden. This would make a fantastic period family home.

Burford Gardens is just a short walk from Palmers Green overground station with quick links to the city via Finsbury Park and Moorgate. Southgate underground station is also a short bus ride away, offering easy access to the Piccadilly line. A great selection of shops, restaurants, and cafes can be found on Aldermans Hill and Green Lanes, and the house is conveniently close to Broomfield and Grovelands parks, offering beautiful green spaces for relaxation and outdoor activities.

Entrance hallway with original tessellated tiled floor • Two connected reception rooms • French doors to garden • Morning room • Kitchen • Stained glass windows • The first floor offers two double bedrooms and one single bedroom • Bathroom with separate WC • Potential to further convert the loft and extend • Mature west facing rear garden measuring 70ft x 20ft with side access.

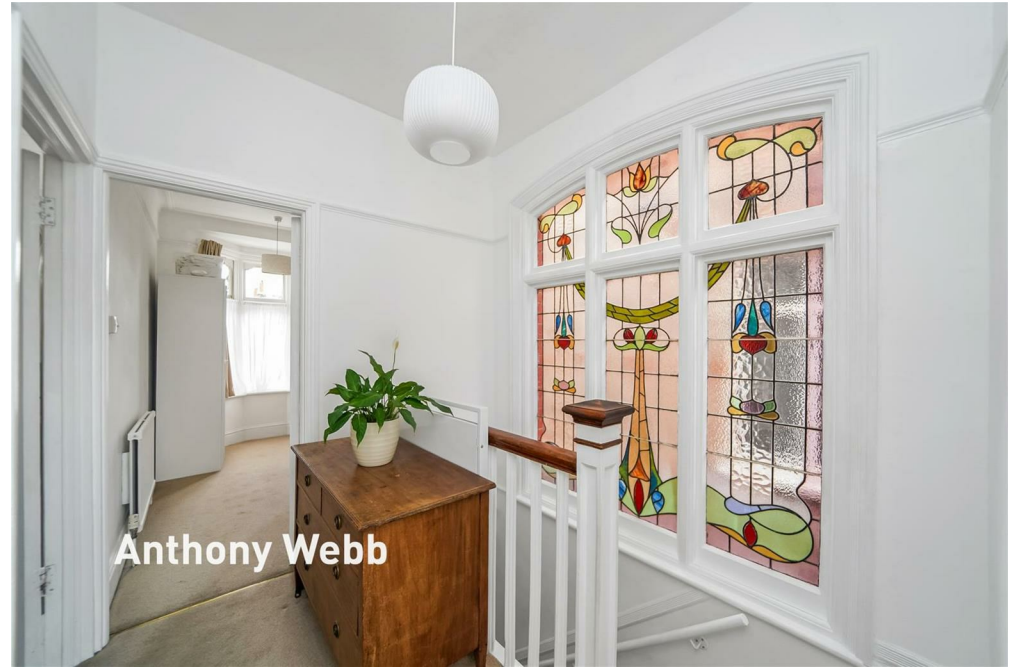
Enfield Council Tax Band E

- Three Bedrooms
- Two Reception Rooms
- Morning Room & Kitchen
- Tessellated Tiled Floor
- Stained Glass Windows
- End of Terrace
- Edwardian Character House
- French Doors to Garden





Anthony Webb



Anthony Webb



Anthony Webb



Anthony Webb

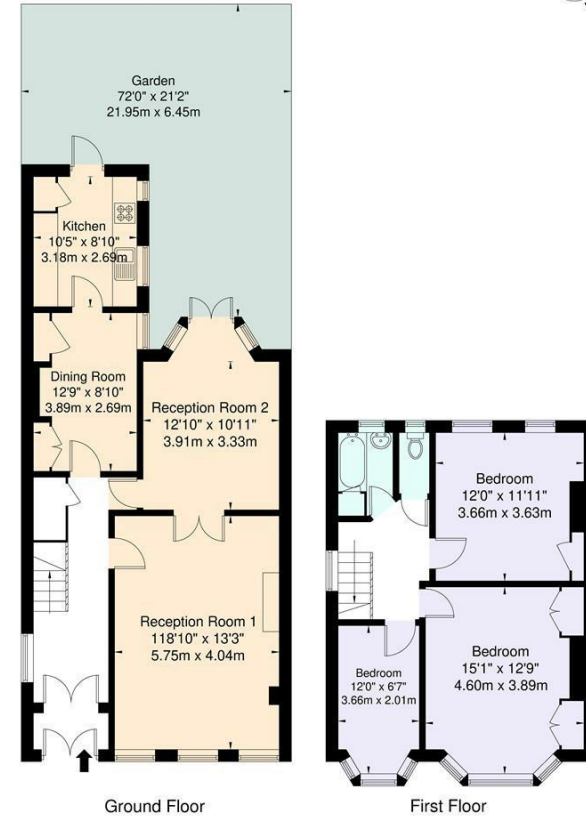
Burford Gardens Palmers Green London N13 4LR

Tenure: Freehold
Gross Internal Area: 1289.00 sq ft



Energy Efficiency Rating		Current	Potential
Very energy efficient - lower running costs			
(92 plus) A			
(81-91) B			
(69-80) C			
(55-68) D			
(39-54) E			
(21-38) F			
(1-20) G			
Not energy efficient - higher running costs			
England & Wales		EU Directive 2002/91/EC	
Environmental Impact (CO ₂) Rating		Current	Potential
Very environmentally friendly - lower CO ₂ emissions			
(92 plus) A			
(81-91) B			
(69-80) C			
(55-68) D			
(39-54) E			
(21-38) F			
(1-20) G			
Not environmentally friendly - higher CO ₂ emissions			
England & Wales		EU Directive 2002/91/EC	

Burford Gardens, N13 4LR
Approximate Gross Internal Area = 119.8 sq m / 1289 sq ft



Ground Floor
First Floor
For Illustration Purposes Only - Not To Scale

This floor plan should be used as a general outline for guidance only and does not constitute in whole or in part an offer or contract. Any intending purchaser or lessee should satisfy themselves by inspection, enquiries and full survey as to the correctness of each statement. Any areas, measurements or distances quoted are approximate and should not be used to value a property or be the basis of any sale or let.

Property particulars as supplied by Anthony Webb Estate Agents are set out as a general outline in accordance with the Property Misdescriptions Act (1991) only for the guidance of intending purchasers of lessees, and do not constitute any part of an offer or contract. Details are given without any responsibility, and any intending purchasers, lessees or third parties should not rely on them as inspection or otherwise as to the correctness of each of them. We have not carried out a structural survey and the services, appliances and specific fittings have not been tested. All photographs, measurements, floor plans and distances referred to are given as a guide only and should not be relied upon for the purchase of carpets or any other fixtures statements or representations of fact, but must satisfy themselves by or of fittings, gardens, roof terraces, balconies and communal gardens as well as tenure and lease details cannot have their accuracy guaranteed for intending purchasers. Lease details, service ground rent (where applicable) are given as a guide only and should be checked and confirmed by your solicitor prior to exchange of contracts. no person in the employment of Anthony Webb has any authority to make any representation or warranty whatever in relation to this property.

348 Green Lanes, Palmers Green, London N13 5TJ
020 8882 7888
palmersgreen@anthonywebb.co.uk
anthonywebb.co.uk

Anthony Webb
ESTATE AGENTS